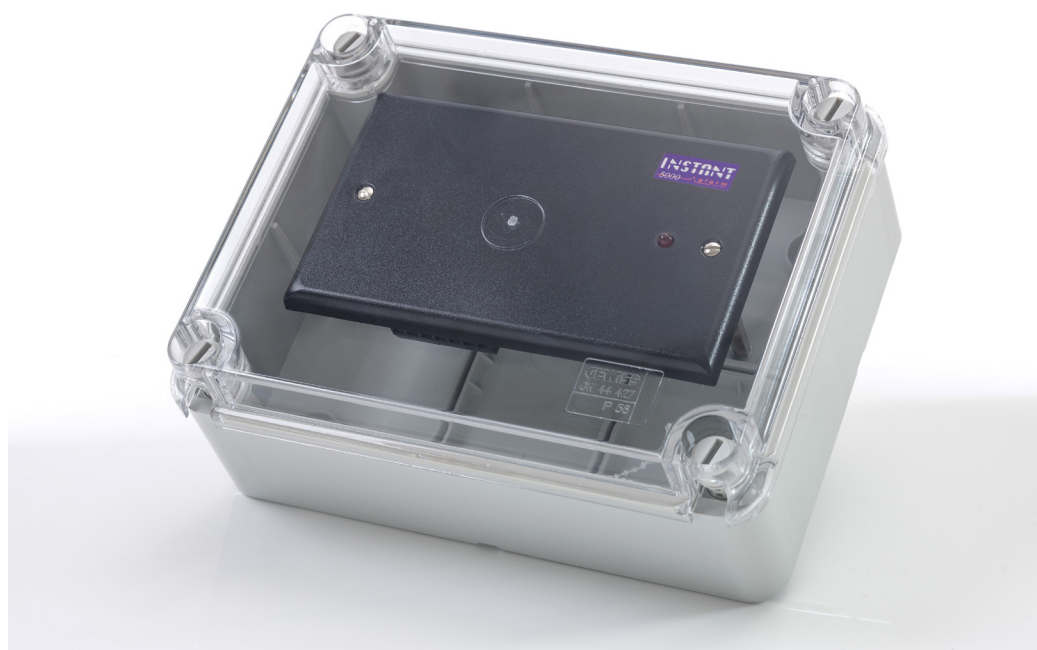


EXTERNAL SHARED RECEIVER UNIT PRODUCT DATASHEET



Description

The External Shared Receiver Unit (I523) is normally installed to cover exercise areas, car parks, secure gardens, etc, and are usually surface mounted on boundary fences, walls, etc.

They are connected to a Receiver Unit that is located inside the relevant building via external cable that is on the data loop of the system. This gives the relevant area covered its 'address' or location, for example, 'WARD 1 EXTERNAL COURTYARD' or as specified by the end user.

The External Shared Receiver Unit has a tinted, rectangular, polycarbonate infrared transparent fascia and is fitted into an IP56 rated polycarbonate box with a transparent cover.

As the Receiver Units are outside the building, the Personal Infrared transmitter that is used by staff to trigger the system has to be pointed directly at or waved in the general direction of the External Receiver Unit.

Depending on weather conditions, the Receivers can be activated by the Personal Infrared Transmitters from up to 40m away.

Model No:	I523, I523.1
Power Source:	12 to 13.8V DC
Size:	Height 3.39" x Width 5.91" x Depth 2.76"
Weight:	18oz (1.13lb)
Backbox:	None - Surface Mounted